

V-4830HD Vertical Baler

Performance Data:

Cylinder	6" B x 3.5" R X 48" S
Pump	10.5 GPM
Motor	10HP
System Pressure	2,000 psi (2,200 psi, max)
Platen Force	56,500 lbs
Platen Face Pressure	39 psi (1440 platen sq. in.)
Platen Penetration	24" (below door)
Cycle Time (chamber empty)	58 seconds
Control Voltage	120 VAC
Electrical	208/230/460 3-phase; NEMA 4 UL Listed box & controls (22MM); OFF/ON security key switch; 3-Position selector switch; EMERGENCY STOP button; IEC motor controls; programmable relay; side mounted
Interlock Switches	Interlocks prevent the baler from operating when the feed gate or bale door is open except when operated in manual mode during bale ejection

Dimensional Data:

Overall Dimensions	77 1/4"W X 43"D X 142 1/2"H
Feed Height	49 1/2"
Bale Chamber	30"D X 41 1/2"H
Feed Opening	48" L X 25" H X 30" D
Bale Door Clearance (open)	50"

Structural Data:

Body Side Plates	7 ga. side plates, 10" structural channel, 4" & 6" structural angle 1/2" X 4" Flatbar
Body Floor	7 ga. floor plate, 6" 8.2# structural channel
Floor Structure	6" 8.2# structural channel
Top Cylinder Supports	6" 13# structural channels integrated into main frame of 10" structural channel & 1" X 12" plate beam
Platen Face Plate	1/4" plate, 6" 8.2# structural channels, 3/8" UHMW wear pads
Bale Door	7 ga. Door plate, 4" X 3" structural tube top rail, 4" 5.4# structural angles and channel
Ejector	Manually-engaged, chain-type

Bale Size:

Bale Width	48"W X 30"D X 48"H
Bale Volume	40 cu. ft.
Bale Weight (OCC)	Up to 800 lbs.
Bale Tie-off.	Insert wires through front and rear
Bale Ties	(4) 14 ga. X 14' long

Total Baler Weight: 3,880 lbs

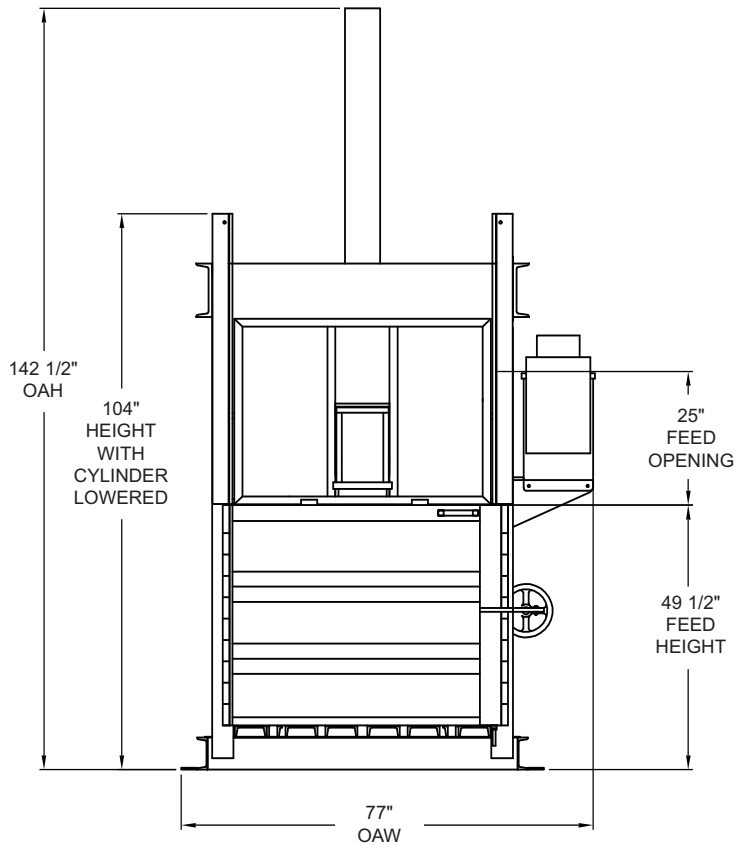
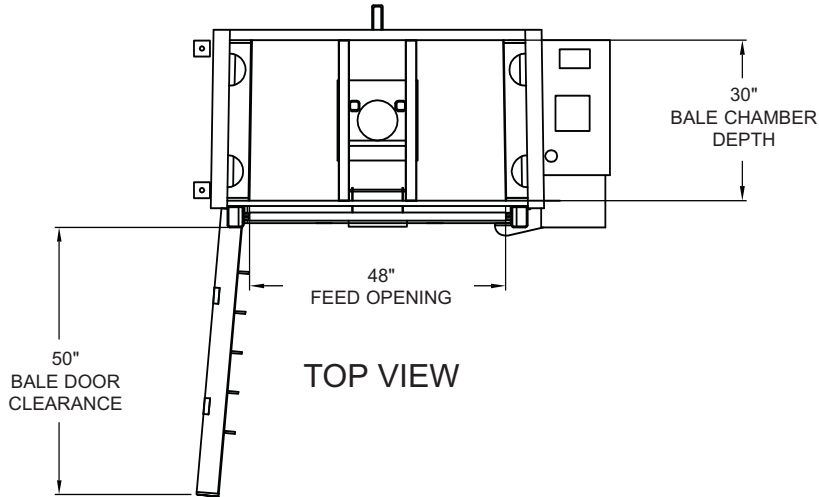


Options:

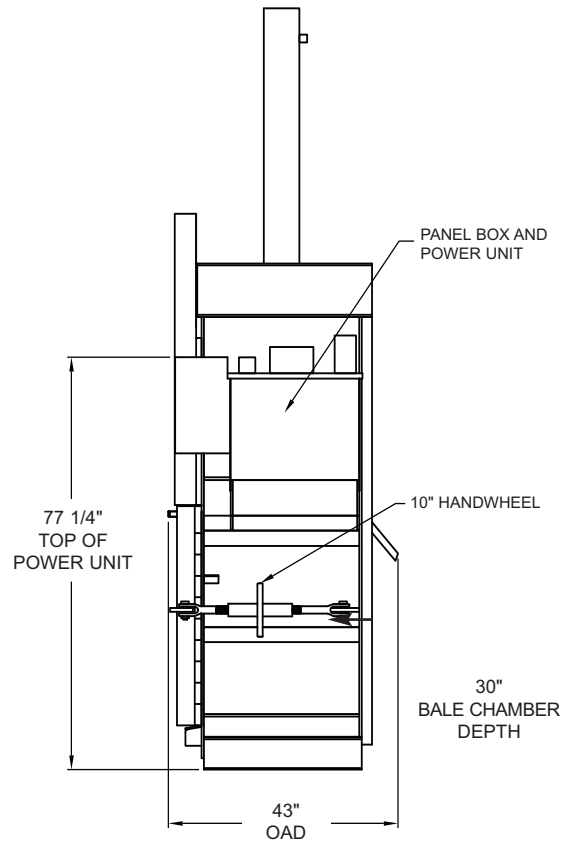
- ▼ Disconnect
- ▼ Bale Made
- ▼ Single Phase
- ▼ Oil Heater



V-4830HD Vertical Baler



FRONT VIEW



SIDE VIEW



Pictures in this literature are illustrative only. Specifications are subject to change without notice in order to accommodate improvements to the equipment. Certified in compliance with ANSI Regulation Z245.5 and all OSHA standards. Products must be used with safe practice and in accordance with said regulations and standards.

