

Get Extreme Satisfaction!

GEMINI-X™ XTREME™

Multi-Material Horizontal Baler

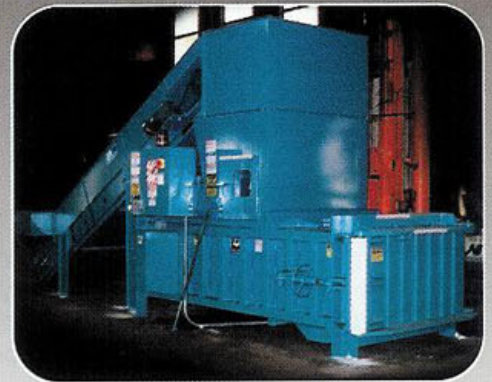


Marathon's **Gemini-Xtreme®** is a moderate duty, closed-end horizontal baler that allows you to process a variety of material such as PET, aluminum or steel cans, paper, plastics, OCC, newsprint, and similar material with no fluffing or preconditioning. Contact your Marathon representative to find out if the **Gemini-Xtreme** is the right equipment for your application.

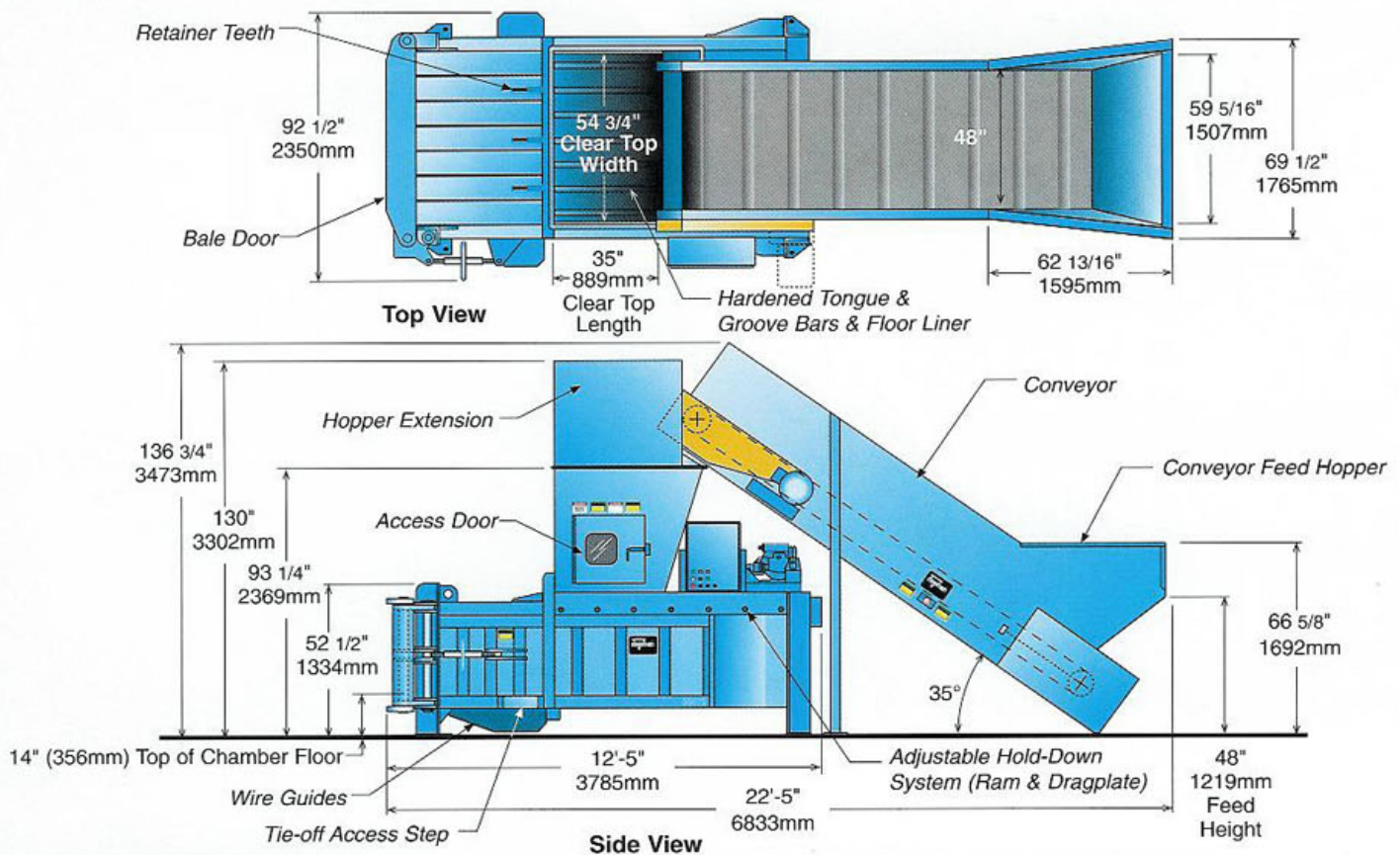
The **Gemini-Xtreme** Features:

- ✓ Heavy-duty construction
- ✓ Hardened tongue & groove floor and side liners
- ✓ Full penetration ram for maximum compaction and full bale ejection
- ✓ Adjustable cold roll bar assembly hold-down system with integrated heavy-duty drag plate for ram
- ✓ Reversible and adjustable bolt-on shear blade
- ✓ Increased forces and pressures over predecessor
- ✓ Bale size: 48"L x 60"W x 30"H
- ✓ Bale weights (OCC): 1100–1400 lbs.
- ✓ Wire guides for quick and easy tie-offs
- ✓ Programmable, UL Listed controller permits automatic or manual operation
- ✓ Backed by Marathon's extensive baler warranty

The Gemini-Xtreme® can be fitted with an Above Floor Conveyor (as shown) or a Pit Conveyor. Marathon manufactures sliderbed and chainbelt conveyors of all sizes for a variety of applications.



Gemini-Xtreme™ Multi-Material Horizontal Baler



Structural Specifications:

- Body Sides:** 3/8"
- Body Floor:** 1/2" (with 3/8" ASTM 400 brinell liner, and 1/2" ASTM 400 brinell tongue & groove bars).
- Body Side & Floor Reinforcement:** Heavy structural tubing and angle.
- Bale Chamber Top & Bottom:** Heavy wall 8x3 rectangular tubing, with 3/8" liners
- Shear Blade:** 4140 cold drawn tool steel, bolt-on, adjustable & reversible
- Ram Hold-Down System:** Adjustable cold roll bar assembly with integrated heavy duty drag plate (adjusts as hold-downs are adjusted)
- Ram Top:** 1/2" thick A-514 plate (integrated shearing edge)
- Ram Bottom:** 1/2" thick with 1/2" ASTM 400 brinell tongue & groove plates/liners
- Ram Sides:** 1/2" steel with nylon wear pads at rear corners
- Ram Face:** 1" heavily reinforced plate

Hydraulic/Electrical Specifications:

- Power Unit (Motor Pump) 20 HP/34 GPM
- Programmable Controller Standard
- Control Voltage. 460 VAC, 3 phase (UL Listed Control Panel)
- Cylinder Size two (2) cross-cylinders, 6" bore, 4" rod, 57" stroke
- Reservoir Capacity 100 gal.

Performance Specifications:

- Standard Operating Pressure 3000 psi
- Platen Force (overall) 147,300 lbs.
- Platen Force - PSI 81.8 psi
- Cycle Time 34 seconds
- Nominal Bale Size 48"L x 60"W x 30"H
- Approximate Bale Weight (OCC) 1100-1400 lbs.

Baler Weight 17,500 lb.

Ask about our Leasing and Financing Programs



Pictures in this literature are illustrative only. Specifications are subject to change without notice in order to accommodate improvements to the equipment. Certified in compliance with ANSI Regulation Z245.2, and all OSHA standards. Products must be used with safe practice and in accordance with said regulations and standards.