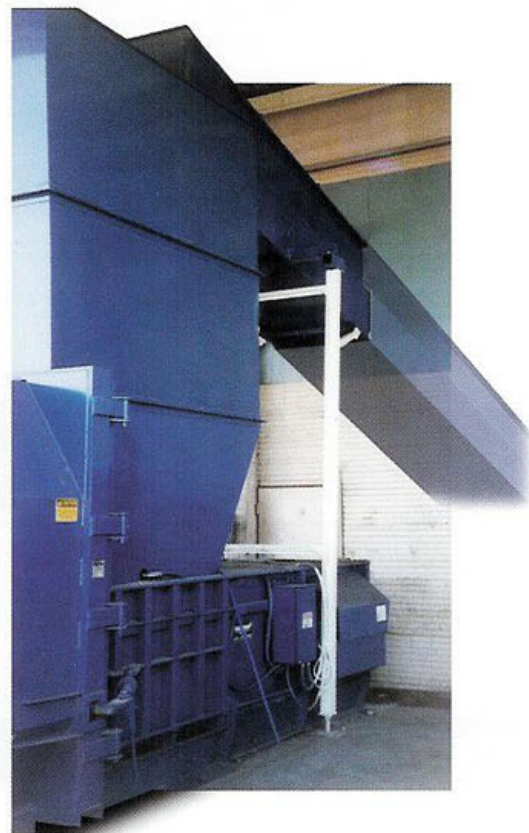


Sliderbed Conveyors

Marathon's Sliderbed Conveyors are friction driven conveyors with a belt supporting bed for low to medium volume applications. This group of conveyors is divided into three classes:

Sliderbed Balerfeed (SB) for low volume (2 to 4 tons/hour) baler and compactor feed applications such as Marathon's Closed-End and Side-Eject balers and waste compactors. They feature a 2 ply rubber cleated belt; 2 hp motor for above grade (AG) and 3 hp motor for below grade (BG) applications.



Sliderbed Warehouse (SBW) used for overhead transfer to compactors and low volume (1 to 2 tons/hour) balers. They feature a 2 ply ruff top belt; 2 to 5 hp motor; and light weight construction for suspension systems.

Sliderbed Heavy Duty (SBH) used for medium volume (3 to 15 tons/hour) baler feed applications where heavier duty components and longer belts are required such as in Material Recovery Facilities. They are also ideal for Closed-End and Side-Eject balers as well as Open-End, Auto-Ties and shredders. They feature 3 to 10 hp motors; 3 ply rubber cleated belt; spherical roller bearings.



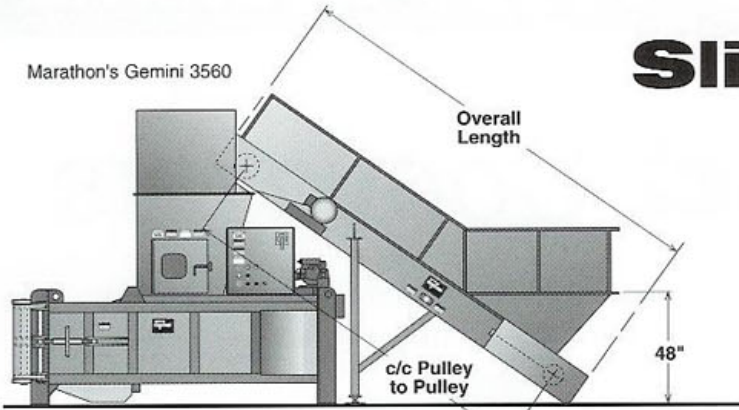
Marathon Equipment is your single source for conveyors, waste handling, recycling and reduction equipment

Marathon's Gemini 3560

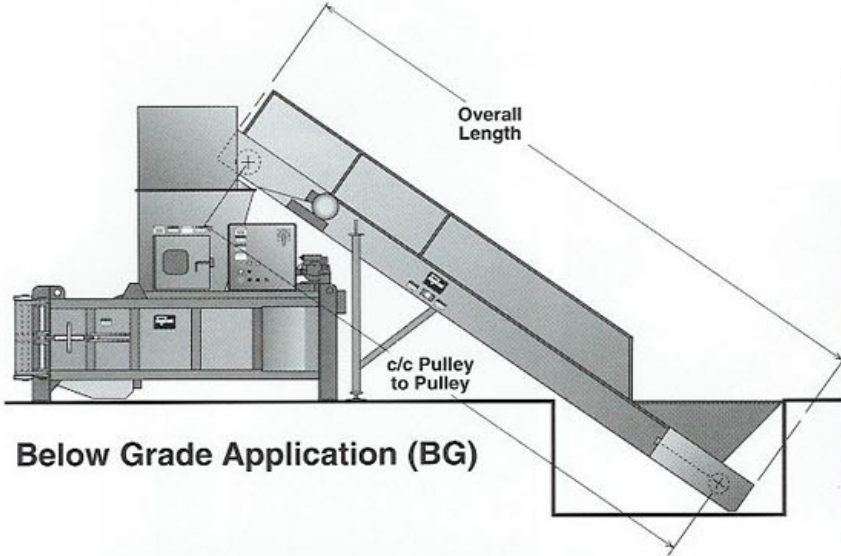
Sliderbed Conveyors

Optional Equipment

- ▼ Sorting platforms and binwalls
- ▼ Above grade hoppers
- ▼ Portable units
- ▼ Dumper systems
- ▼ Hydraulics
- ▼ Special plate and sheet metal fabrication



Above Grade Application (AG)



Below Grade Application (BG)



This thru-the-wall sliderbed conveyor application feeds a compactor on the outside.

General Specifications

Product Class	Application	Widths	Overall Lengths	Configuration	Note:
SB	Low volume (2 to 4 tph)	24" - 72"	up to 40 ft.	AG or BG	Variable Speed (VS) control optional
SBW	Low volume (1 to 2 tph)	20" - 36"	up to 100 ft.	W (Warehousing)	
SBH	Medium volume (3 to 15 tph)	36" - 72"	up to 100 ft.	BG	Heavy Duty 3 ply belt, Spherical Roller Bearings, Large Diameter Pulley



Marathon Equipment is your single source for conveyors, waste compaction systems, recycling equipment and reduction equipment!



Pictures in this literature are illustrative only. Specifications are subject to change without notice in order to accommodate improvements to the equipment. Certified in compliance with ANSI Regulations and all OSHA standards. Products must be used with safe practice and in accordance with said regulations and standards.

ENVIRONMENTAL INDUSTRY ASSOCIATION