

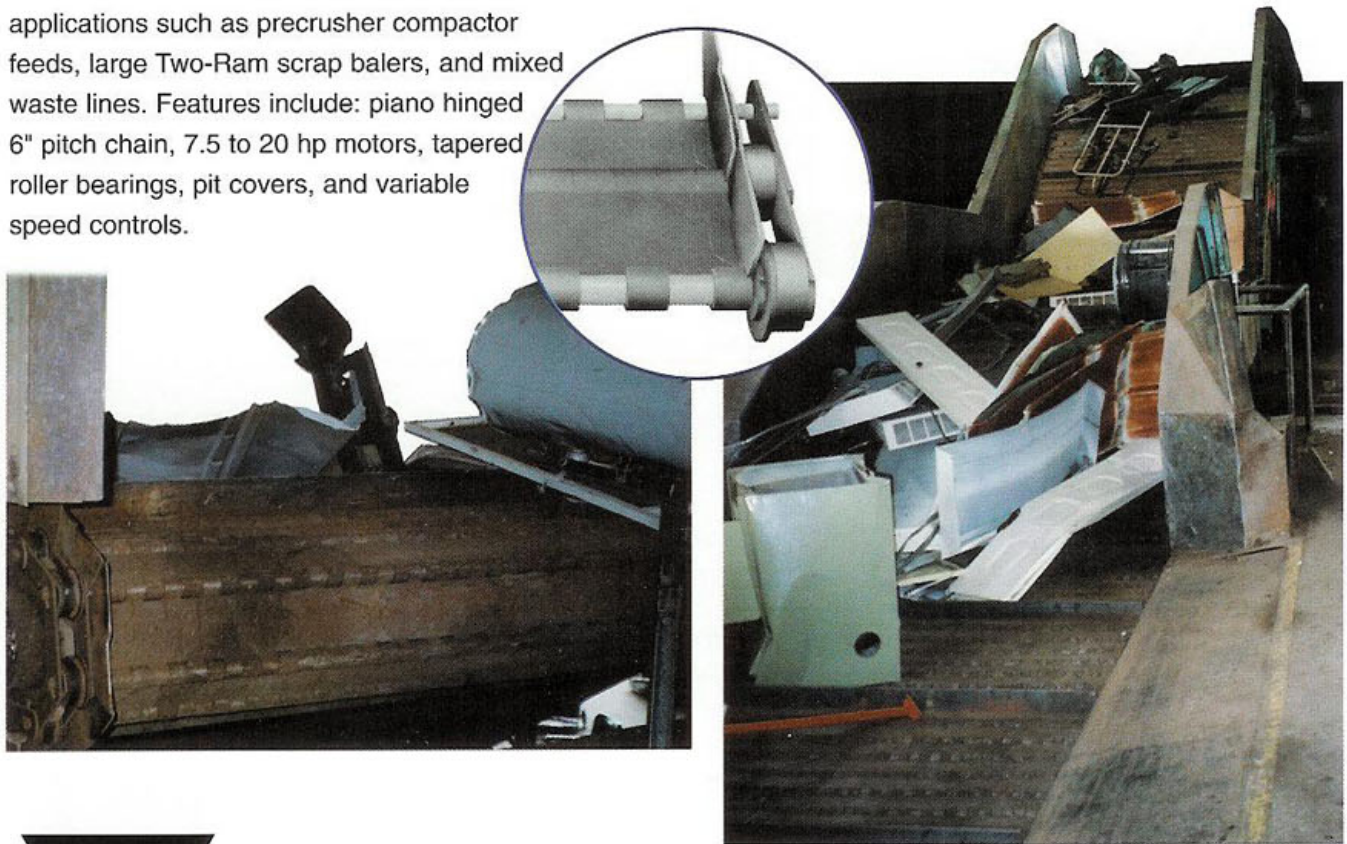
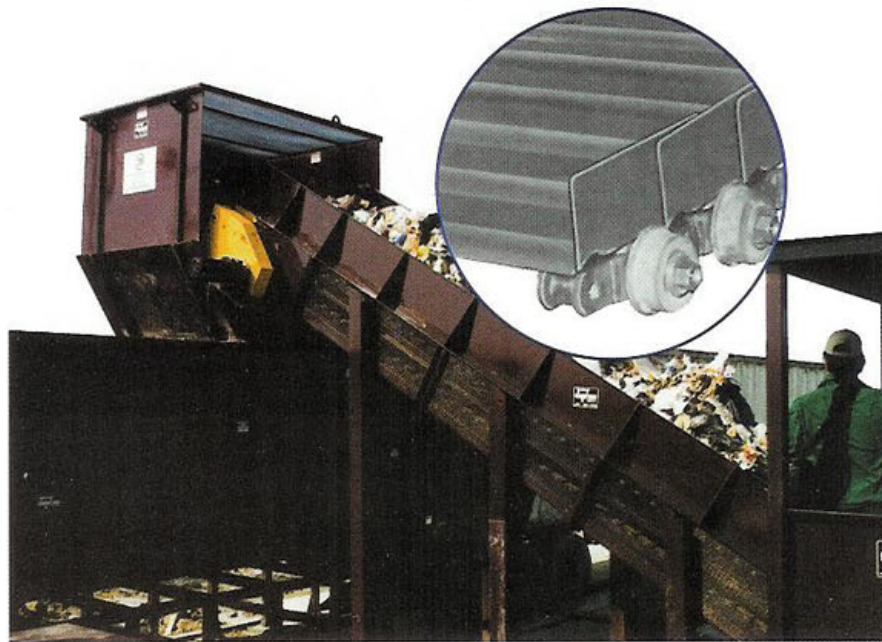
# Steelbelt Conveyors

## SA Class Steel Apron Belt

**Conveyors.** A superior, 3/8" or 1/2" pan belt for extreme service up to 8 ft wide. SA conveyors are used for high volume (20 to 50 tons/hour), heavy-duty applications such as feeding MSW into Marathon's TS-2000 Transfer System compactor, large Two-Ram scrap balers, C&D lines, and mixed waste lines. Features include: beaded pan 6", 9" or 12" pitch chain, 10 to 25 hp motors, tapered roller bearings, pit covers, and variable speed controls.

## SE Class Economy

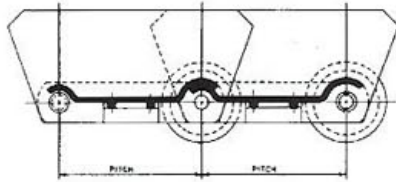
**Steelbelt Conveyors.** A competitively priced equivalent to other piano hinged belts up to 7 ft. wide. SE conveyors can be used for high volume (12 to 30 tons/hour), heavy-duty applications such as precrusher compactor feeds, large Two-Ram scrap balers, and mixed waste lines. Features include: piano hinged 6" pitch chain, 7.5 to 20 hp motors, tapered roller bearings, pit covers, and variable speed controls.



*Marathon Equipment is your single source for conveyors, waste handling, recycling and reduction equipment*

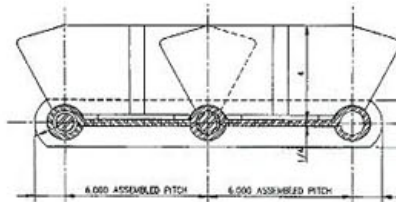


# Steelbelt Conveyors



## SA Class

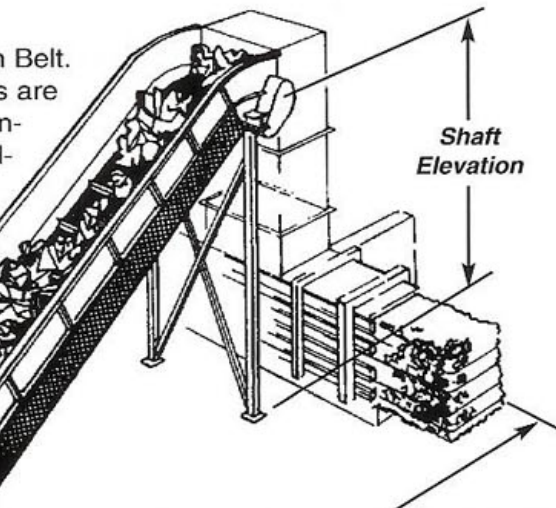
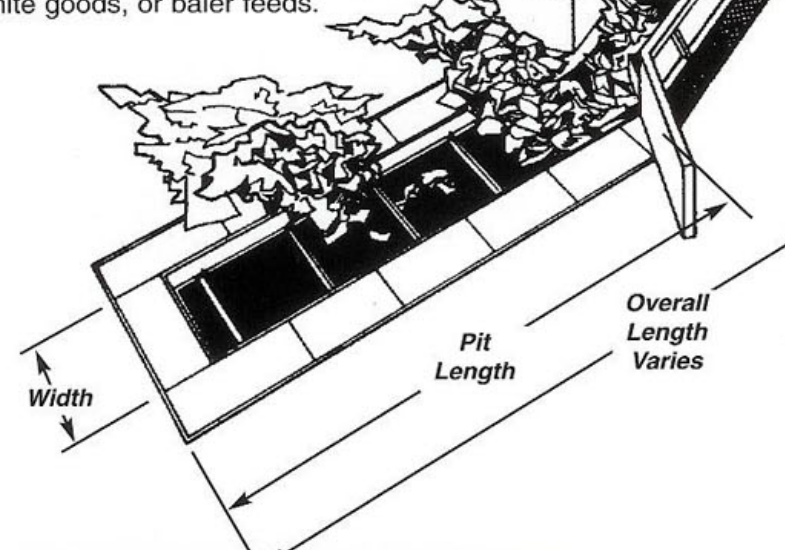
Style A1 Heavy Duty Steel Apron Belt. The shallow double beaded pans are recommended for heavy duty continuous service, high impact loading such as MSW or for handling abrasive materials.



## SE Class

The Piano Hinge Steel Belt are for light to medium duty applications such as machine turn-

ings, punch press scrap, loose paper, white goods, or baler feeds.



## Optional Equipment

- ▼ Sorting platforms and binwalls
- ▼ Above grade hoppers
- ▼ Portable units
- ▼ Dumper systems
- ▼ Hydraulics
- ▼ Special plate and sheet metal fabrication

**Also see Marathon's Chainbelt and MRF Conveyor Systems.**

## General Specifications

| Product Class | Application                | Width up to: | Shaft Elev.  | Pit Length    | Note:                                |
|---------------|----------------------------|--------------|--------------|---------------|--------------------------------------|
| SE            | High volume (12 to 30 tph) | 7 ft.        | up to 18 ft. | up to 100 ft. | Variable Speed Control (VS) standard |
| SA            | High volume (20 to 50 tph) | 8 ft.        | up to 18 ft. | up to 100 ft. | Variable Speed Control (VS) standard |



*Marathon Equipment is your single source for conveyors, waste compaction systems, recycling equipment and reduction equipment!*



Pictures in this literature are illustrative only. Specifications are subject to change without notice in order to accommodate improvements to the equipment. Certified in compliance with ANSI Regulations and all OSHA standards. Products must be used with safe practice and in accordance with said regulations and standards.