

The

UNTOUCHABLE VIP

*Marathon's **Untouchable VIP** (Vert-I-Pack®), developed for the narrow alleys of Chicago, is now available anywhere where space is limited but compaction is required.*

Compaction Power...

The **Untouchable VIP** saves space by using more than 13 tons of crushing force to reduce the contents of several open containers into one container! Imagine the time saved by your hauler each time he picks up a **Untouchable VIP** instead of all those open top containers.

Compact Size...

the compact size of the **Untouchable VIP** allows it to fit anywhere, even inside buildings.

Side Mount Power Unit...

the **Untouchable VIP's** power unit is accessible from the side rather than in the rear. This makes maintenance easy especially in areas where space is limited such as alleys.

Containers with Casters...

the **Untouchable VIP's** 3 yard heavy duty containers are on casters and can easily be rolled to area accessible to waste collection truck.

Other features include: triple interlock system, key operation to prevent unauthorized use, controls employee pilferage, and much more.

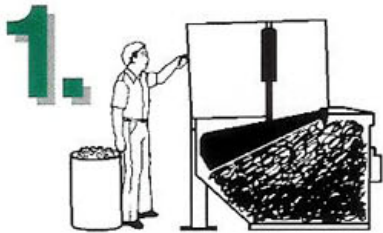
Ideal for...

- ▼ Restaurants ▼ Motels & Hotels ▼ Nursing Homes ▼ Hospitals ▼ Supermarkets ▼ Malls
- ▼ In-plant Assembly Areas

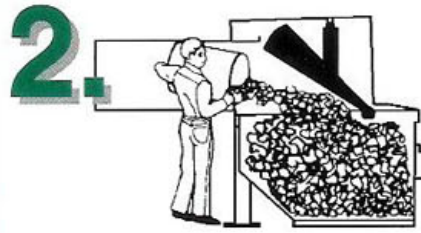


Untouchable VIP® Easy To Use As...

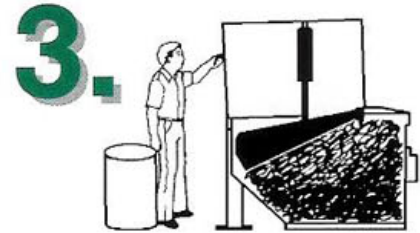
Totally
UL
Listed!



Operator inserts key and turns to "UP" position. When ram moves to up position the door can be opened.



The large door opening allows even a 30 gallon container to be emptied easily. The new waste material is dumped into the cavity left in the container by previous ram position.



AUTO-CYCLE STANDARD!
After feeding, operator closes door and removes key – his job is finished.
UNIT CYCLES AUTOMATICALLY WHEN KEY IS TURNED (and removed)!
More than 13 tons of crushing power forces the ram 18" into the container!

Untouchable VIP® Specifications:

Totally UL Listed

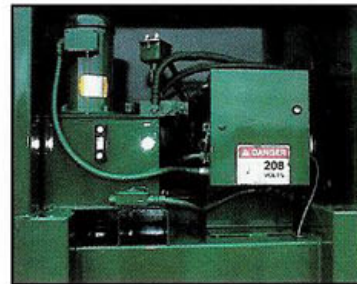
Charge Box Capacity		
Mfrs. Rating.....	0.72 cy.	0.55 m ³
WASTEC Rating.....	0.54 cy.	0.41 m ³
Container Capacity.....	2.5 cy.	1.91 m ³
Clear Top Opening.....	26" x 46"	660 x 1170mm
Cycle Time.....	29 sec.	29 sec.
Total Normal Force.....	26,400 lbs.	117 kN
Total Maximum Force.....	30,200 lbs.	134 kN
Electric Motor.....	3 hp	2.2 kW
Voltage.....	1/60/230 & 3/60/208,230,460	

Available with 3/4 hp, single phase, 120 volt power pack.
Plug it into any standard 20 amp, 120 volt wall outlet!

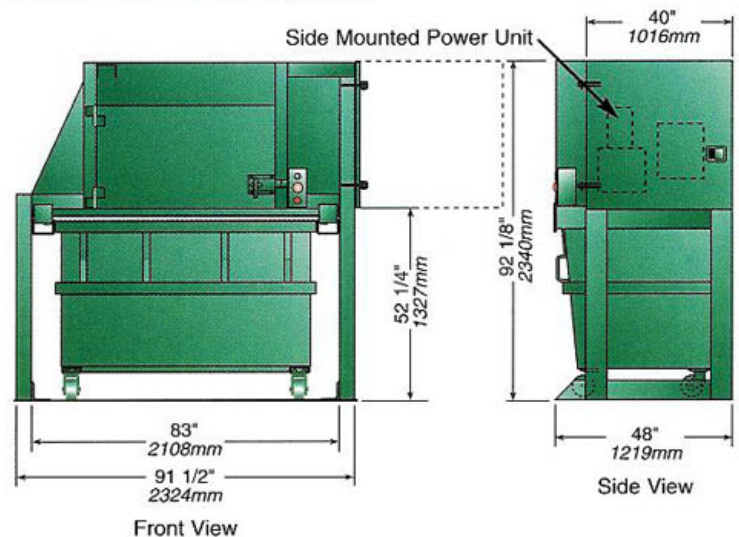
Untouchable VIP® Dimensions:

Feed Height.....	52 1/4"	1327 mm
Overall Height.....	92 1/8"	2340 mm
Overall Width.....	91 1/2"	2324 mm
Overall Depth.....	48"	1219 mm
Container Weight.....	825 lb.	375 kg
Complete Assembly Weight.....	3675 lb.	1667 kg

Patent Nos. 4235165 & 4424740



The side mounted power unit offers easy access for maintenance on the motor and electrical panel.



ENVIRONMENTAL INDUSTRY ASSOCIATION