

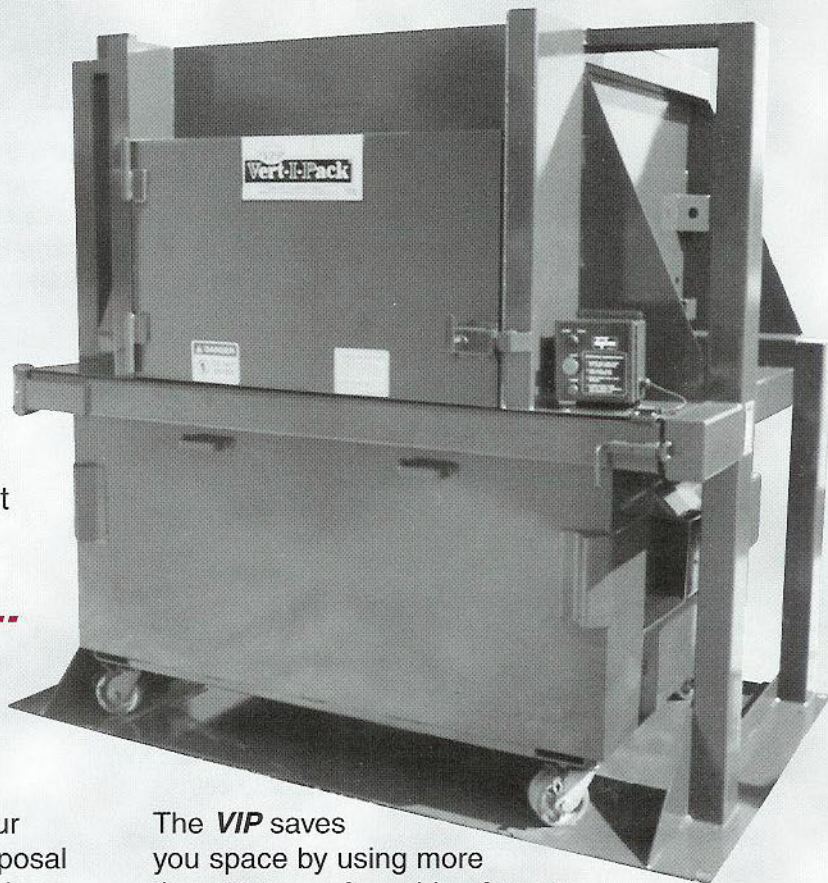
VERT-I-PACK® FL/3 Portable Packer

Designed for...

- ▼ Restaurants
- ▼ Motels & Hotels
- ▼ Nursing Homes
- ▼ Hospitals
- ▼ Supermarkets
- ▼ Malls
- ▼ In-plant Assembly Areas

Totally

Listed!



Compact Size...

the compact size of the VIP allows it to fit anywhere, even inside buildings.

Containers with Casters...

the VIP FL/3 containers can be easily rolled to area accessible to waste collection truck.

Marathon's patented **Vert-I-Pack® (VIP)** - your silent housekeeper, tidies up your refuse disposal area. No more unsightly open containers to draw scavengers and vermin, not to mention your local health inspector! Your refuse stays inside the unit, not strewn all over.

Since the **VIP** is key operated, you control the usage. You won't pay for your neighbor's collection fees - only your own.

With the optional Ozone Odor Control System, the **VIP** stores waste in an ozone rich atmosphere that virtually eliminates odors, rodents, insects and their larvae - even under the most demanding conditions!

The **VIP** has no heavy or clumsy lids to open and close - just a door that's as easy to open as your kitchen door.

The **VIP** saves you space by using more than 13 tons of crushing force to reduce the contents of many open containers into one **VIP** container!* Imagine the time saved by your hauler each time he picks up a **VIP** instead of all those open top containers.

The **VIP** helps control employee pilferage. The optional security kit enables the unit to be fed from inside the building, eliminating the employees' temptation to put merchandise into a box, stash the box in the trash container and return at night to retrieve YOUR merchandise.

The **VIP** saves time and worry for both you and your hauler by eliminating weekend overflow - your hauler doesn't have to schedule those expensive weekend pickups!

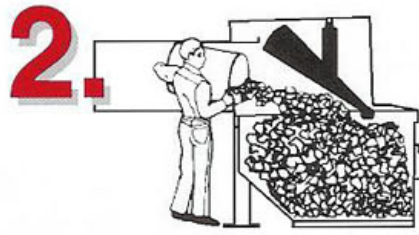
* A 4:1 compaction ratio is average. However, much higher ratios have been achieved in field tests and will depend on the type of refuse being compacted.

Vert-I-Pack® Easy To Use As...

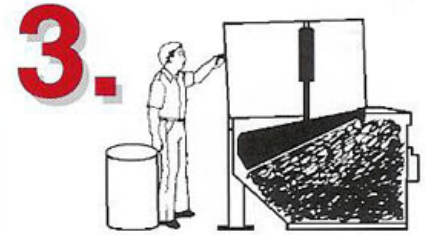
Totally
UL
Listed!



1. Operator inserts key and turns to "UP" position. When ram moves to up position the door can be opened.



2. The large door opening allows even a 30 gallon container to be emptied easily. The new waste material is dumped into the cavity left in the container by previous ram position.



3. **AUTO-CYCLE STANDARD!**
After feeding, operator closes door and removes key – his job is finished.
UNIT CYCLES AUTOMATICALLY WHEN KEY IS TURNED (and removed)!
More than 13 tons of crushing power forces the ram 18" into the container!

VERT-I-PACT® Specifications:

Totally UL Listed

Charge Box Capacity

Mfrs. Rating	0.72 cy.	0.55 m ³
WASTEC Rating	0.54 cy.	0.41 m ³
Clear Top Opening	23.5" x 46"	597mm x 1170mm
Cycle Time	30 sec.	29 sec.
Total Normal Force	26,400 lbs.	117 kN
Total Maximum Force	30,200 lbs.	134 kN
Electric Motor	3 hp	2.2 kW
Voltage	1/60/230 & 3/60/208,230,460		

Available with 3/4 hp, single phase, 120 volt power pack.
Plug it into any standard 20 amp, 120 volt wall outlet!

VERT-I-PACT® FL/3 Dimensions:

Feed Height	46 3/4"	1188 mm
Overall Height	86 1/2"	2197 mm
Overall Width	96"	2438 mm
Overall Depth	63 1/2"	1613 mm
Container Weight	675 lb.	306 kg
Complete Assembly Weight	3375 lb.	1531 kg

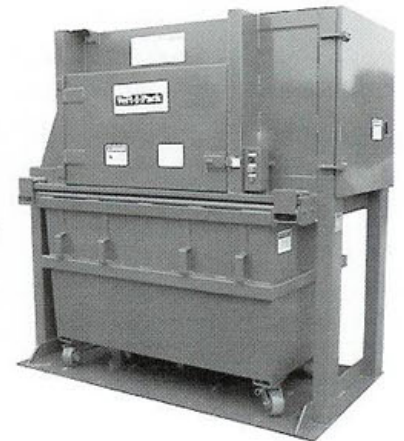
Patent Nos. 4235165 & 4424740

VERT-I-PACT® with Triple Interlock System

- ▼ Door interlock prevents door from being opened at all times except when the unit is in proper feeding position.
- ▼ A second interlock prevents unit from cycling (operating) when the door is open.
- ▼ The third interlock prevents the unit from functioning when the container is not in proper position.

Check out Marathon's Untouchable VIP

With its side-mounted power unit, the Untouchable VIP offers even greater space saving features. It can be installed against a back wall like in a narrow alley.



Pictures in this literature are illustrative only. Specifications are subject to change without notice in order to accommodate improvements to the equipment. Certified in compliance with ANSI Regulation Z245.2, all OSHA standards, and certified under WASTEC's Stationary Compactor Certification Program. Products must be used with safe practice and in accordance with said regulations and standards.



ENVIRONMENTAL INDUSTRY